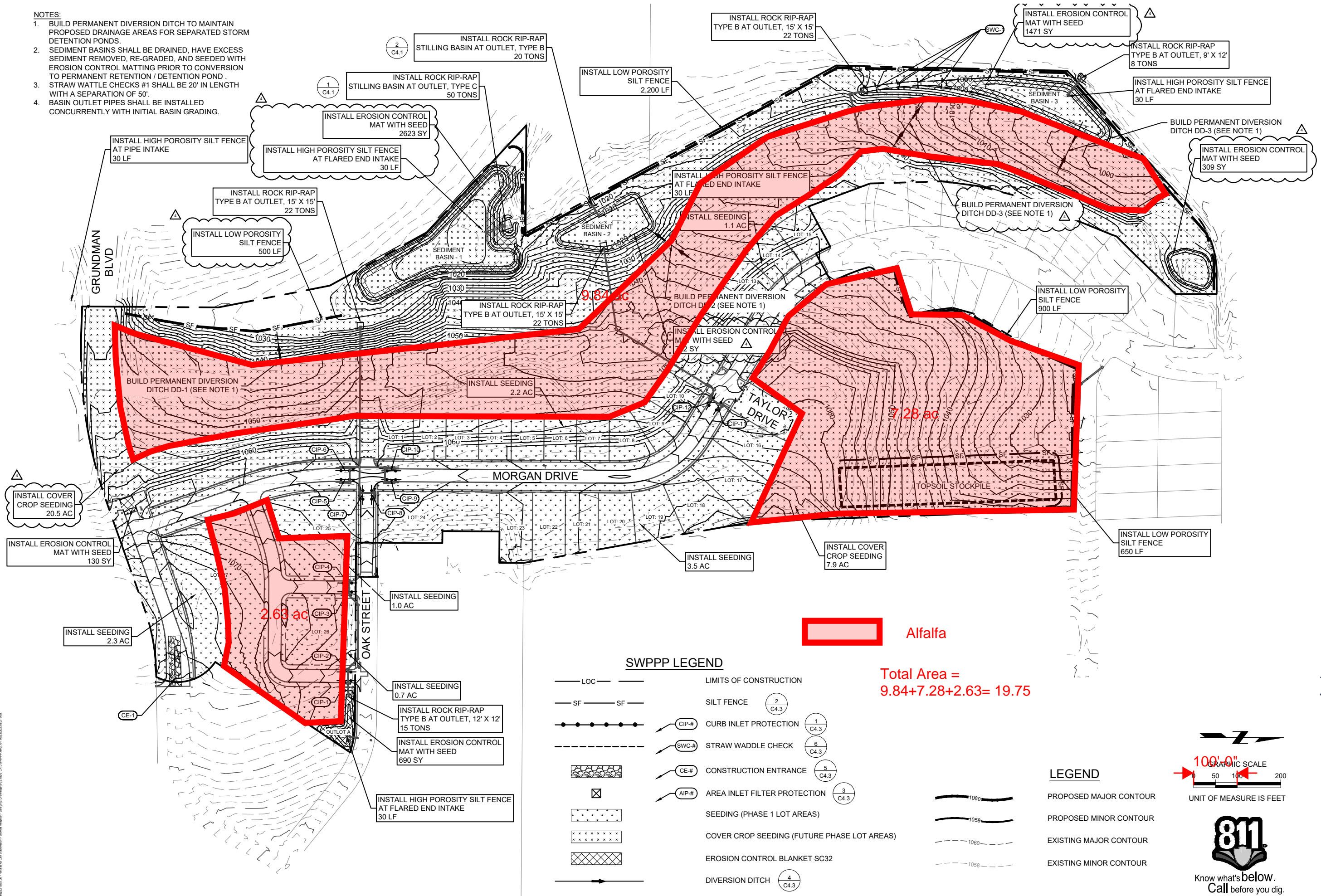


- NOTES:
- BUILD PERMANENT DIVERSION DITCH TO MAINTAIN PROPOSED DRAINAGE AREAS FOR SEPARATED STORM DETENTION PONDS.
  - SEDIMENT BASINS SHALL BE DRAINED, HAVE EXCESS SEDIMENT REMOVED, RE-GRADED, AND SEEDED WITH EROSION CONTROL MATTING PRIOR TO CONVERSION TO PERMANENT RETENTION / DETENTION POND.
  - STRAW WATTLE CHECKS #1 SHALL BE 20' IN LENGTH WITH A SEPARATION OF 50'.
  - BASIN OUTLET PIPES SHALL BE INSTALLED CONCURRENTLY WITH INITIAL BASIN GRADING.



2023  
KREIFELS HILLS SUBDIVISION  
(CLINT AND KIM)  
NEBRASKA CITY, NEBRASKA

SWPPP



PROJECT NO. 221855  
DATE 10/23/2023  
DRAWN BY IBK  
FILE NAME S-221855\_C4.0 SWPPP.dwg  
FIELD BOOK NC #5 PGS 1-26  
FIELD CREW NF  
SURVEY FILE NO. SV-221855  
PLAN IN HAND SV-221855  
INITIALS PIH INI  
DATE PIH DATE  
70 PERCENT REVIEW 70% INI  
INITIALS 70% DATE  
95 PERCENT REVIEW 95% INI  
INITIALS 95% DATE  
REVISIONS 10/23/23

SWPPP LEGEND

- LOC — LIMITS OF CONSTRUCTION
- SF — SF — SILT FENCE
- CIP-# — CURB INLET PROTECTION
- SWC-# — STRAW WATTLE CHECK
- CE-# — CONSTRUCTION ENTRANCE
- AIP-# — AREA INLET FILTER PROTECTION
- SEEDING (PHASE 1 LOT AREAS)
- COVER CROP SEEDING (FUTURE PHASE LOT AREAS)
- EROSION CONTROL BLANKET SC32
- 4 — DIVERSION DITCH

Total Area =  
9.84+7.28+2.63= 19.75

Alfalfa

- LEGEND
- 1060 — PROPOSED MAJOR CONTOUR
  - 1058 — PROPOSED MINOR CONTOUR
  - 1060 — EXISTING MAJOR CONTOUR
  - 1058 — EXISTING MINOR CONTOUR

